

PC-PLANNER NT⁺

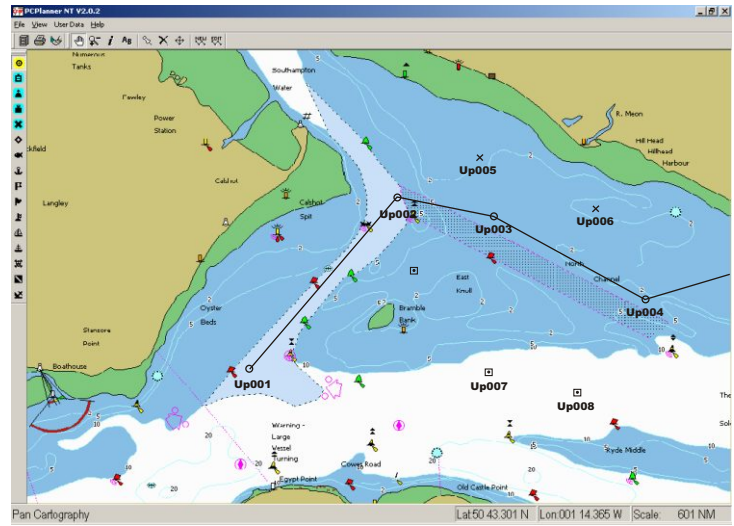
THE ELECTRONIC CHART STANDARD

Have you ever wanted to plan next summer's cruise, or check out that nice anchorage you found last weekend, but been unable to, because your electronic chart plotter is stuck on the boat? Now you can do all that and more, with C-Map's New PC-PlannerNT.

If your PC runs Windows 95/98/ME/2000/XP, C-Map's PC-PlannerNT will turn your home computer into the perfect navigation planning tool. Using the same C-MapNT electronic chart cartridges that you use on your boat, you can display all of your electronic charts in full colour on your PC screen. Zooming, panning, entering marks, creating routes, in fact every planning function of your chart plotter is now easily done on your PC.

At the heart of the PC-PlannerNT, is the new C-Card Reader which is available in 2 versions; parallel port or USB port. Featuring a dual slot cartridge holder, allowing two C-Cards to be read simultaneously, this unit transmits the chart data to the PC and also allows programming of C-Map's **128Kb User C-Cards**.

Supplied on CD-ROM the PC-PlannerNT software turns your PC into a powerful planning tool. With it's simple user interface, you can quickly view the chart data, take A to B measurements, manage your waypoint database, look at previous tracks, create/edit routes and do many other important planning tasks all from the comfort of your own arm chair.



UK RRP - £125.00 + VAT

PARALLEL PORT SPECIFICATION

Power Requirements

- 35mA @ 12 volts

Cartridge Slots

- 2 x C-Cards or User Cards

Printer Connection

- Includes Pass Through printer Connection

Computer Requirements

- Windows 95/98/ME
- Bi-Directional Parallel Port

PC-Planner Kit Includes:-

- C-Card reader, 240V Adaptor,
- Parallel cable, User manual,
- Software (CD-ROM)

USB PORT SPECIFICATION

Power Requirements

- Power from USB Port

Cartridge Slots

- 2 x C-Cards or User Cards

Computer Requirements

- Windows 95/98/ME/2000/XP
- USB Port

PC-Planner Kit Includes:-

- C-Card reader
- User manual
- Software (CD-ROM)

+ a natural evolution..!

PC-PLANNER NT⁺

THE ELECTRONIC CHART STANDARD

Transferring Data from PC-PlannerNT+ to the Chart Plotter

Once you have created your routes and waypoints at home on PC-PlannerNT+ you will want to transfer this information to your chart plotter. How automatic or easy this is to do varies from chart plotter to chart plotter. Some chart plotters support C-Map's User Cards on which you can read/write route and waypoint data and then take the User Card to the boat and upload the data in to the chartplotter. Other plotters need you to connect the PC to the chart plotter with a serial interface lead and then upload the data through the plotter's NMEA port. A few plotters do not have any facility to exchange route and waypoint data and in this case you will have to print off the route and waypoint lists from PC-PlannerNT+ and then re-enter them into the chart plotter manually.

The table below lists the most popular European chart plotters and what transfer method they support:-

B&G CND	-	User Card Support
Cetrek 345	-	User Card Support
Furuno	-	Cannot use with PC-PlannerNT+
Humminbird NS25	-	Manual Transfer Only
Interphase	-	User Card Support
JRC	-	Manual Transfer Only
Leica	-	User Card Support
Lorenz	-	User Card Support
Plastimo 900/950	-	Manual Transfer Only
Plastimo 5500/5600	-	User Card Support (1Mb only)
Raymarine 620/630	-	User Card Support
Raymarine Pathfinder Series	-	NMEA Transfer
Raymarine Pathfinder+ Series	-	User Card Support
Seiwa	-	User Card Support
Simrad CP30/CP32	-	Manual Transfer Only
Simrad CP33	-	NMEA Transfer
Simrad CP40/CP50	-	NMEA Transfer
VDO	-	User Card Support

The above list is only valid for the latest versions of these products. It is possible that your unit may need a hardware/software upgrade - please consult the chart plotter manufacturer.

C-Map recently released a 1Mb User Card and some of the latest units support this User Card and not the original 128Kb User card - please consult the chart plotter manufacturer.

 **+ a natural evolution..!**